



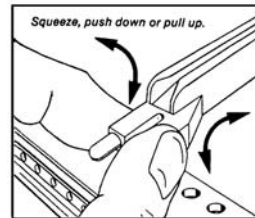
P/N CG1-160  
160mm card guide

End piece for variable length guides

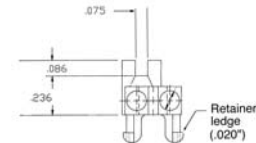
### Card Guides

Specially designed card guides provide easy installation and repositioning, without special tools. Material is durable glass-filled Noryl. Package contains 12 guides. Secure installation by spring loaded retainer ledge on front rail extrusion and vertical insertion into rear extrusion holes.

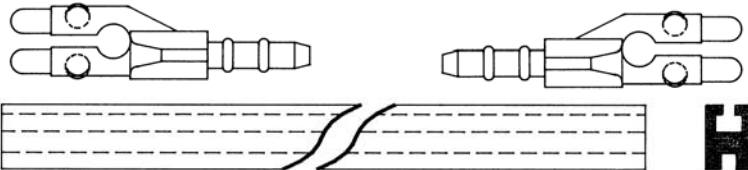
Part No.	Description	Card Thickness	Description
CG1-160/12	160mm	.062"	Glass filled Noryl
CG1-220/12	220mm	.062"	Glass filled Noryl
CG1-280U/12	280mm	.062"	Noryl/Black anodized aluminum
CG1-340U/12	340mm	.062"	Noryl/Black anodized aluminum
CG1-400U/12	400mm	.062"	Noryl/Black anodized aluminum



Installation/removal of guides from front strut



### Guide Types Noryl with Aluminum



Aluminum - "U" type

Non EMC  
Subracks

### Handles

Black Anodized Aluminum handles for 3 and 6 subracks. (Mounting hardware included).

Part No.	Pkg. Qty	Description
HA19-3U	2	Handle for 3U subrack, 8-32 tapped holes
HA19-6U	2	Handle for 6U subrack, 8-32 tapped holes

### Dress Panels

Dress panels provide an attractive, finished look for Vector Card Cages and are required when adding handles. Mounting hardware included. Brushed Aluminum with clear irridite finish.

Part No.	Pkg. Qty	Description
DP-3U	2	For 3U Subrack, 5.25" high X 1.10" wide
DP-6U	2	For 6U Subrack, 10.50" high X 1.10" wide
DP-9U	2	For 9U Subrack, 15.75" high X 1.10" wide

### Top/Bottom Covers

These aluminum panels provide maximum protection for cards and are available in perforated (AC160-84-1) or solid (AC160-84-2). Covers slide easily into DIN extrusion grooves and can be added or removed at any time, no hardware needed. Made of brushed aluminum with clear irridite finish.

Part No.	Pkg Qty	Width	Depth	For Card Size
*				
AC160-84-1, 2	2	16.98"	4.93"	160mm
AC220-84-1, 2	2	16.98"	7.29"	220mm
AC280-84-1, 2	2	16.98"	9.65"	280mm
AC340-84-1, 2	2	16.98"	12.01"	340mm
AC400-84-1, 2	2	16.98"	14.37"	400mm

\*substitute -1 with  
-2 for solid covers



VectorPak™ powered subrack  
with VME J1/J2 backplane and integrated fans

